

Perks of Getting Tax Software Early

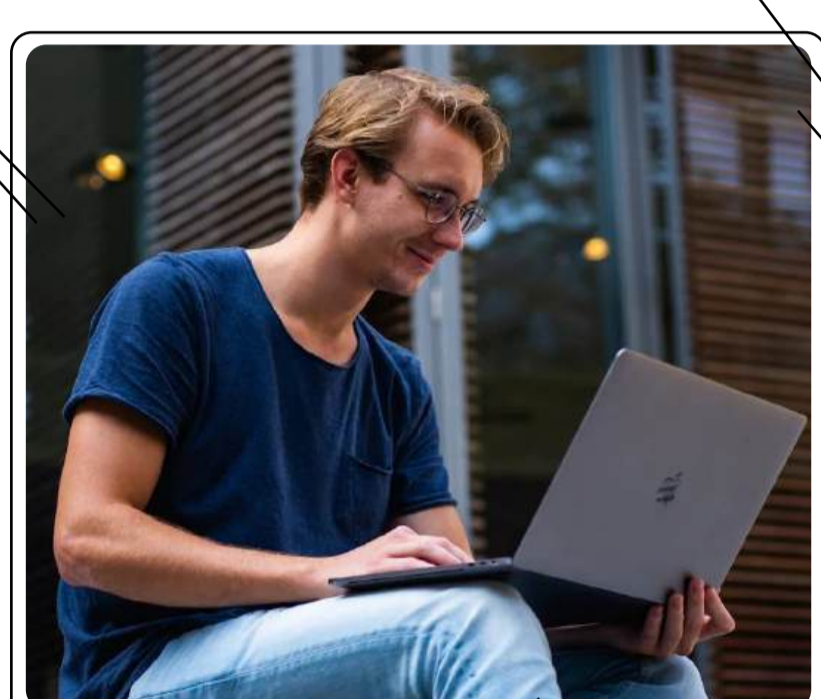
1. Updated Tax Law Integration

Tax laws change regularly, and early adoption means you'll have time to understand how these updates affect your clients. Instead of learning about changes while preparing actual returns, you can familiarize yourself with new regulations and how they're implemented in your software.



2. Stress-Free System Setup

Setting up your software—from configuring client templates to customizing forms and reports—takes time. Early preparation means you can carefully organize your system without the pressure of looming deadlines or waiting for clients.



3. Learn at Your Own Pace

Early adoption gives you valuable time to master your tax software without the pressure of client deadlines. You can explore features thoroughly, practice with sample returns, and customize settings to match your workflow.



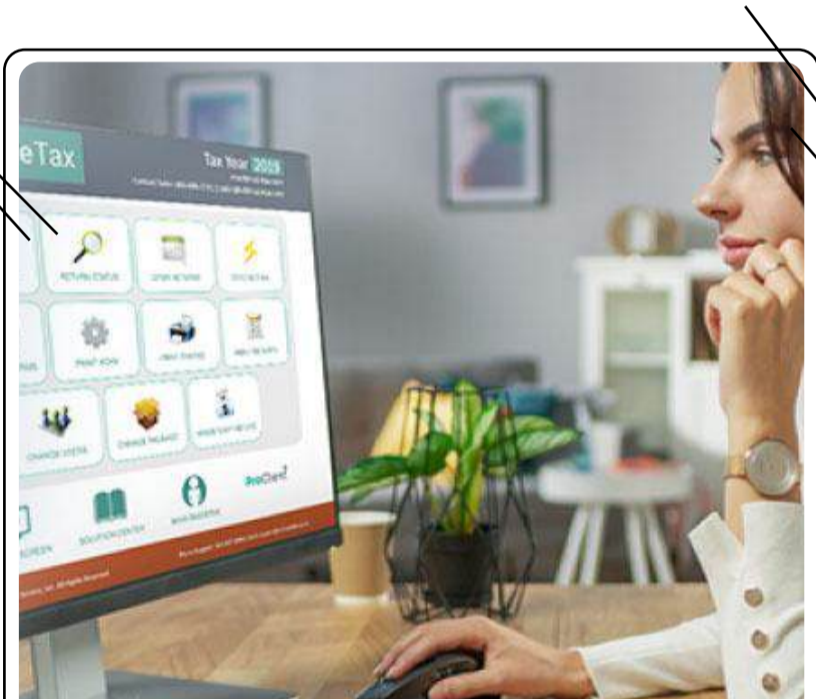
4. Testing E-Filing Systems

Early setup gives you time to test e-filing systems thoroughly. You can verify your EFIN integration, practice submissions, and ensure all state and federal filing capabilities work correctly. This testing prevents costly delays during tax season when quick filing turnaround matters most.



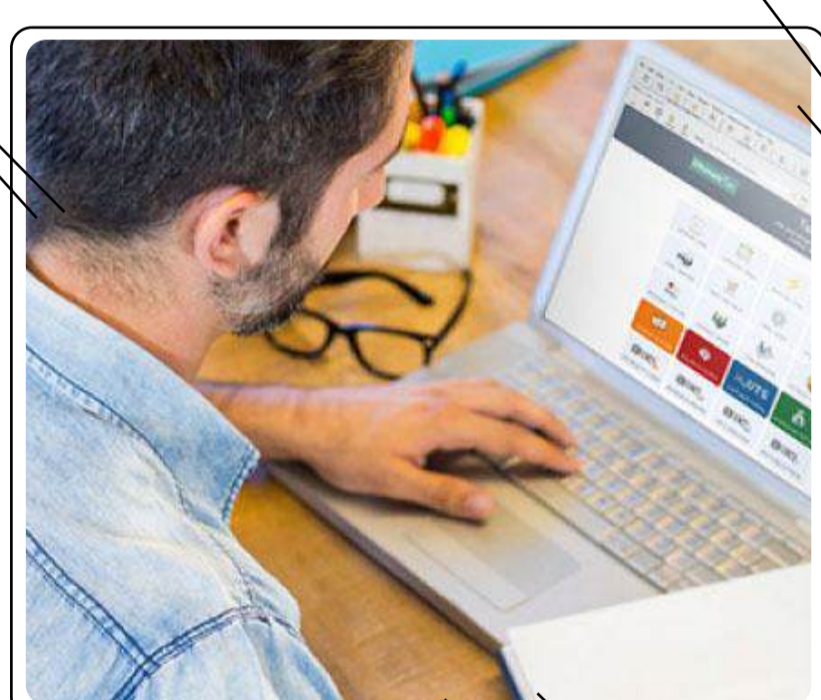
5. Data Migration and Organization

Early software setup gives you time to properly transfer returns from previous years and organize client history. When tax season arrives, every document you need will be right where you expected it to be.



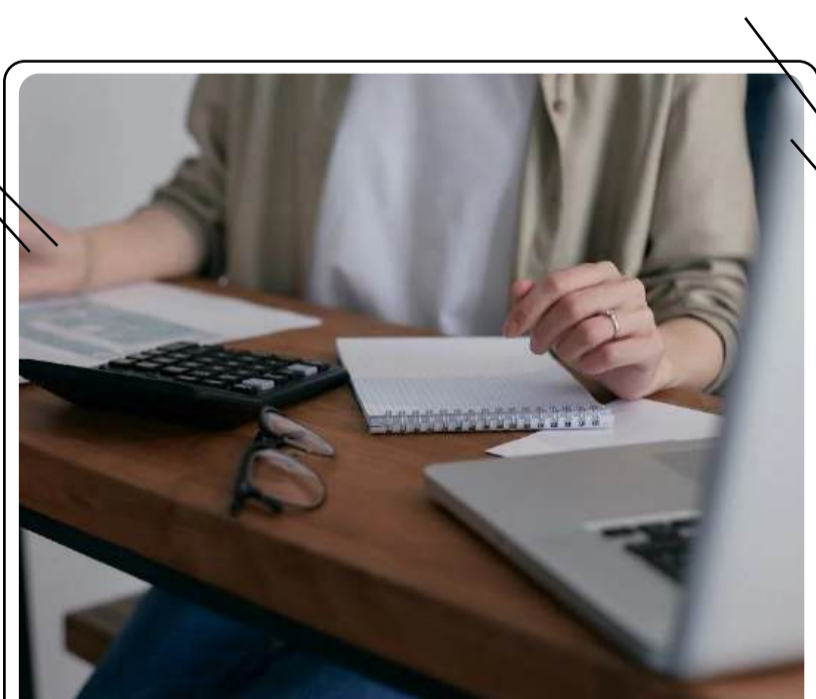
6. Customized Report Templates

Take time to create custom report templates and branded client documents that reflect your business professionally. You can design organized tax packets, engagement letters, and filing instructions that streamline client communication and save time during the busy season.



7. Quality Control Systems

Preparing early allows you to set up quality control processes, such as review checklists, multi-level verifications, and clear procedures for complex returns. These systems ensure accuracy and consistency during high-volume tax seasons.



8. Multi-State Filing

Using the best tax software for multiple states allows you to configure state-specific forms and verify multi-state filing capabilities in advance, ensuring smooth processing for clients with obligations across state lines.



9. Fast, Focused Support

Need help getting started? Off-season means you'll get faster, more thorough support from technical teams who aren't juggling peak-season requests. You'll have their full attention to help you set up your system exactly how you want it.



10. Revenue Planning

Early setup helps you analyze return types and processing times, enabling practical pricing plans based on software features and time investment. This ensures a stronger, more predictable revenue strategy for your tax business.